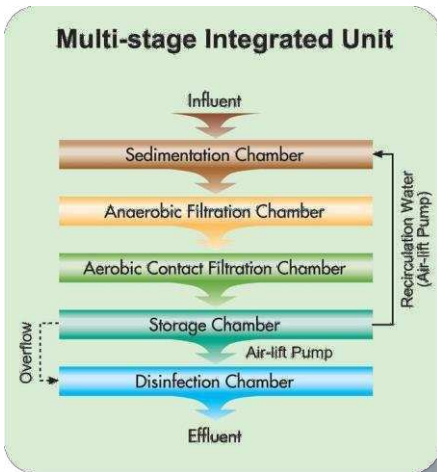
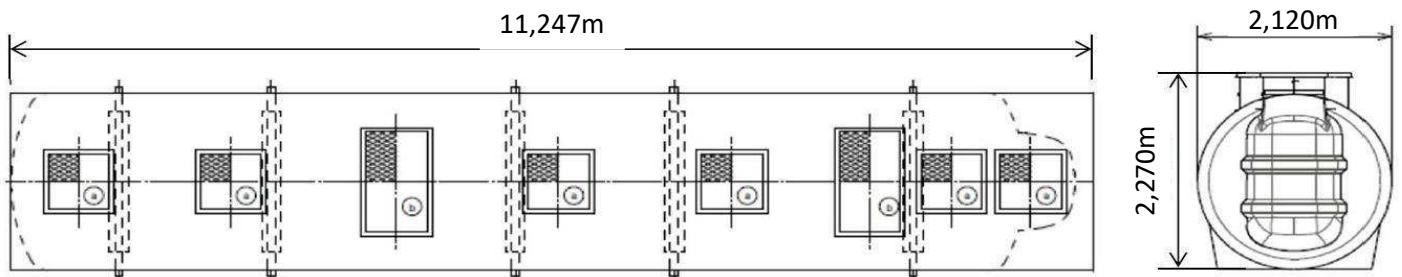
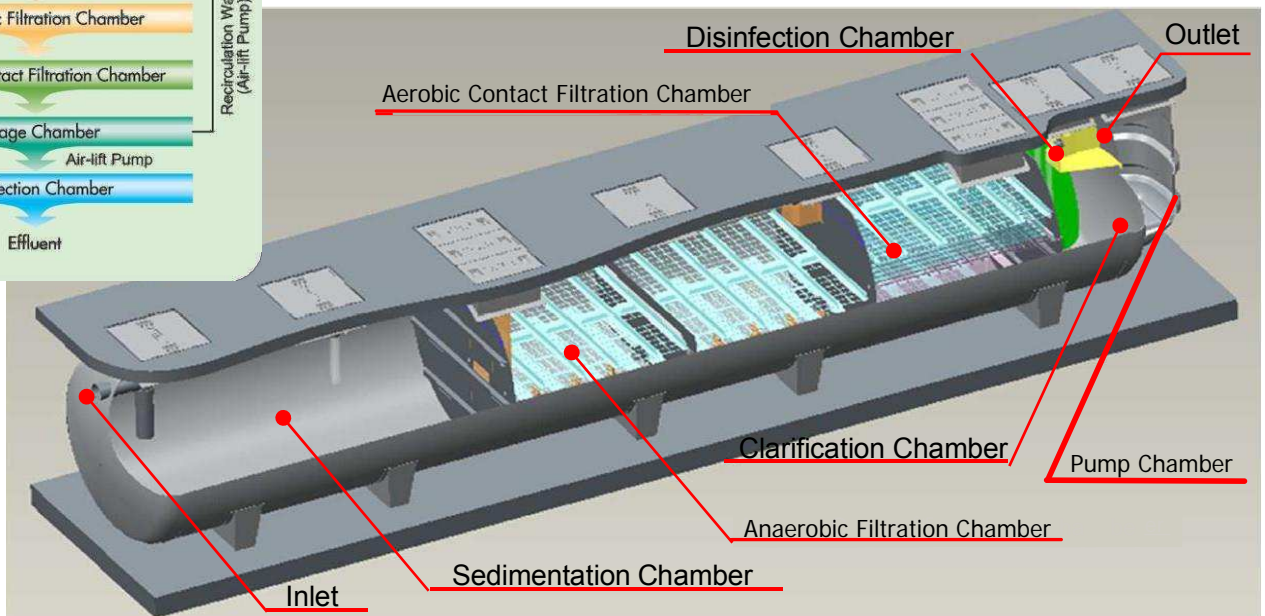


FujiClean CE Jumbo



Secondary Quality

13,500 L/day



WHY FujiClean?

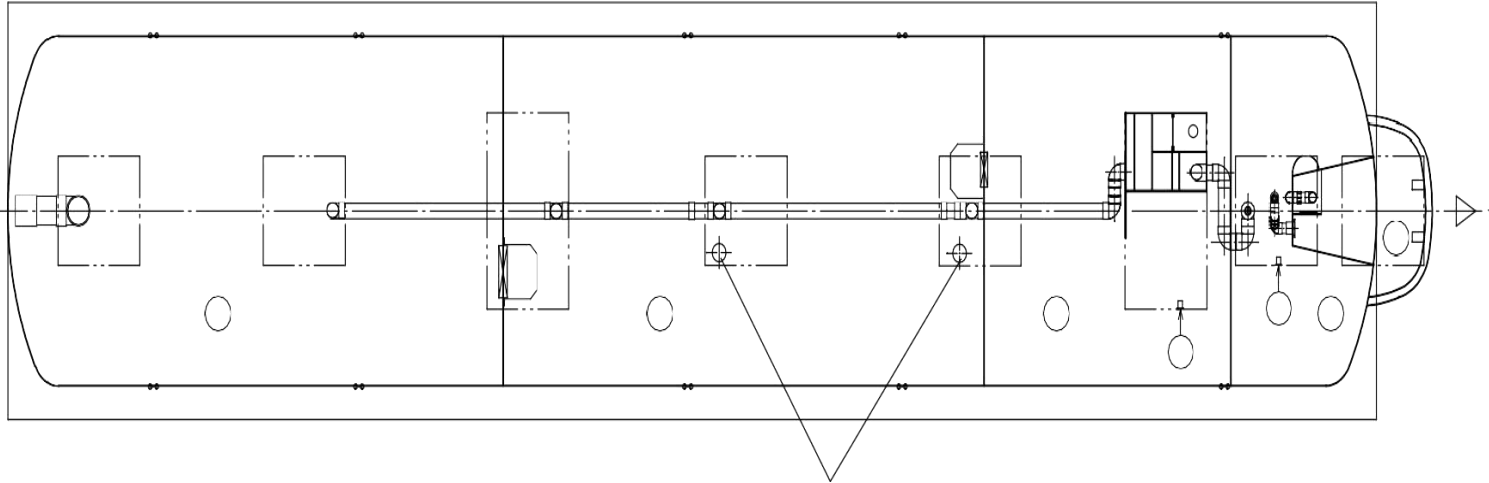
WHY FujiClean CE Jumbo?

- 50 Years experience with wastewater treatment
- Continued research & development
- 50,000 installations per year worldwide
- FujiClean network across the globe

- Minimal Footprint with All in One Tank
- Lightweight Tank only 2,400kg
- Low Operation and Running Cost (only 3 x 140W FujiMAC200 Air Blower)
- Easy to Transport and Install
- Easy to Maintain

Schematics

CE JUMBO



Water Quality Specifications

Designed Hydraulic Loading:	13,500/day	Effluent Quality*:	BOD 20mg/L or less
			SS 20mg/L or less
Treatment Method:	Contact Filtration Bed Process		TN 20mg/L or less
			<i>*Dependent on influent quality</i>

FujiClean CE Jumbo - Model Specifications

Sewer Treatment Plant		Dimensions(mm)	
Daily Hydraulic Loading (L): Maximum	13,500	Width (W):	2,120
Sedimentation Chamber: m3	9.99	Length (L):	11,000
Anaerobic Filtration Chamber: m3	10.02	Height (H):	2,270
Aerobic Contact Filtration Chamber: m3	5.14	Inlet Invert (A):	530
Clarification Chamber: m3	2.25	Outlet Invert (B):	745
		Inlet Pipe Nominal Size (mm):	100
Total Volume: m3	27.40	Outlet Pipe Nominal Size (mm)	100
Weight (kg)	2400		
Air Blower: x 3 FujiMac 200 LPM.			
Materials	Fibreglass Reinforced Plastic (FRP)		